

# E924-H

## Hermetic 5

### STELLE

New proportions highlight the elegance and visual appeal of this wood-burning stove. The door with flush curved glass offers a really clear view of the fire. Fully clad in Majolica in the following colours: Bianco, Ardesia, Grigio Cerato, Nero Opaco, Rosso Lava and Giallo Acceso. Also available in the version with the BCS electronic flame control system.



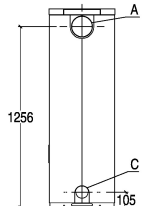
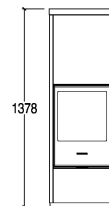
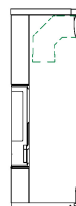
#### GENERAL FEATURES

- Heating: Optional HSS Storage / Natural convection
- Cladding: majolica
- One-piece firebox: airtight in steel
- Firebox: Aluker®
- Stove base: rotating or fixed
- Flue gas deflector / Brazier: Aluker® - Skamolex / cast iron
- Door / Handle: steel with ceramic glass resistant to 750°C / steel and silicone
- Removable ash pan: yes
- Standard flue outlet position: top or rear
- Pre-heated primary and secondary air: adjustable
- Pre-determined tertiary air: pre-heated
- Glass cleaning: continuous air flow
- HSS Heat Storage System: optional
- Ash vacuum cleaner: optional
- Installation: centre-room - wall - corner
- Combustion air kit:

#### TECHNICAL DETAILS

- Energy efficiency class A+ (G → A++)
- Rated output max kW 7,2
- Rated efficiency power % 85
- Rated consumption max kg/h 1,95
- Weight kg 151
- Stove weight with HSS kg 265
- Standard flue outlet Ø mm 150
- Model E924-H

#### COVERS



A	C
150 mm	75 mm

